

---

# Technical Bulletin

---

Division: Automotive  
Category: Technical

Section Title: Body, Cab and Accessories  
TSB No. TS 05 07013

**SUBJECT:** Special Coverage Extension for Specific Paint Peeling on Bumpers or Side Sill Guards

**MODEL(S):** Kizashi (A6B424) models produced in the Sagara plant

**YEAR(S):** Start of production ~ November 29, 2011

**CONDITION:** The primer coat may peel away from the bumpers or side sill guards.

**CAUSE:** Delays that occurred during the painting process created a deficient bond between the primer and the surface being painted.

**CORRECTION:** **DSPM inspection and authorization must be obtained prior to any repairs being performed.** A special coverage extension will apply for vehicles beyond the basic limited warranty limits. The coverage allows for either parts replacement and painting, or repainting of existing parts **after** inspection and documentation by a Suzuki Motor of America, Inc. DSPM. Repairs are to be carried out by a Suzuki Service Provider (only after DSPM inspection and approval) at no charge to the customer for parts and labor up to 9 years with unlimited mileage from the date the vehicle was sold to the retail owner or first placed in service as a demonstrator, whichever is earlier.

Technical Service Department  
Dealership Circulation – Initial and file:

Service Manager	Parts Manager	Service Advisor	Technicians						

Suzuki bulletins are intended for use by professional technicians, NOT a "do-it-yourselfer." They are written to inform these technicians of conditions that may occur on some vehicles, or to provide information that could assist in the proper service of a vehicle. Properly trained technicians have the equipment, tools, safety instructions, and know-how to do a job properly and safely. If a condition is described, DO NOT assume that the bulletin applies to your vehicle, or that your vehicle will have that condition. See your authorized Suzuki service provider for information on whether your vehicle may benefit from the information. Suzuki reserves the right to change technical specifications at any time without prior notice.

<b>Model: Kizashi</b>	<b>Section: Body, Cab and Accessories</b>	<b>TSB No. TS 05 07013</b>
-----------------------	---	----------------------------

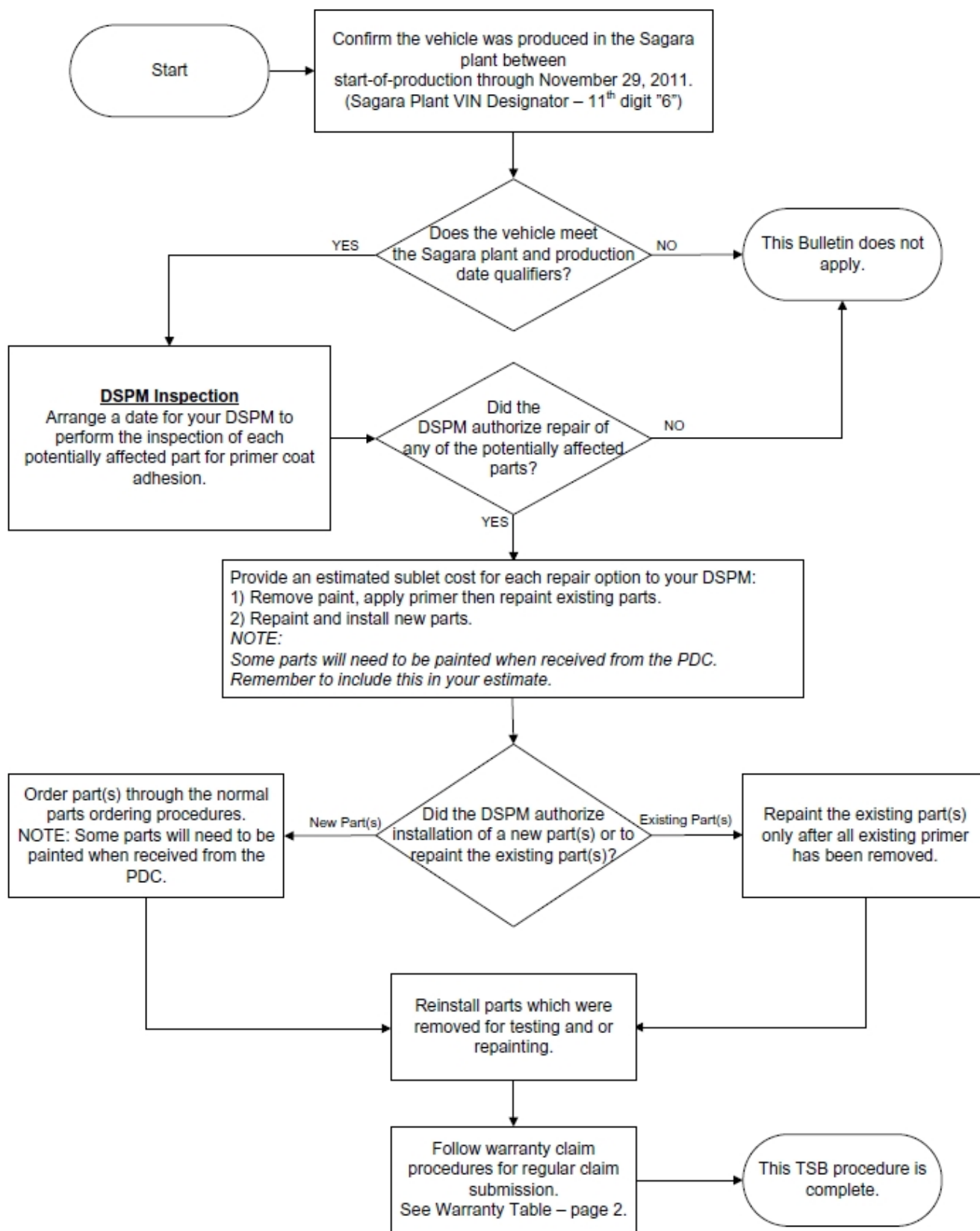
<b>Potentially Affected Parts</b>				
<b>Model</b>	<b>Bumper, Front</b>	<b>Bumper, Rear</b>	<b>Guard, Side Sill Right Hand</b>	<b>Guard, Side Sill Left Hand</b>
<b>Kizashi</b>	<b>X</b>	<b>X</b>	<b>X</b>	<b>X</b>
<b>Kizashi Sport</b>	<b>X</b>	<b>X</b>	<b>X</b>	<b>X</b>

<b>Warranty Information</b>						
<b>Regular Claim Submission – Replace Parts As Required</b>						
<b>Failed Part Number</b>	<b>QTY</b>	<b>Labor Operation</b>	<b>Labor Time</b>	<b>Complaint Code</b>	<b>Defect Code</b>	<b>Sublet Code</b>
<b>71700-PAINT-EXT</b>	<b>0</b>	<b>NA9999</b>	<b>0</b>	<b>99</b>	<b>68</b>	<b>04</b>



**Condition Example**

## WORKFLOW



## INSPECTION PROCESS

### INSPECT FOR PRIMER ADHESION

Perform the inspection by applying and then removing scotch tape No. 600 produced by the 3M Company to the clip spot on the part(s) being tested. The clip spots are unpainted or insufficiently painted areas where clips were attached to the part during the painting process.

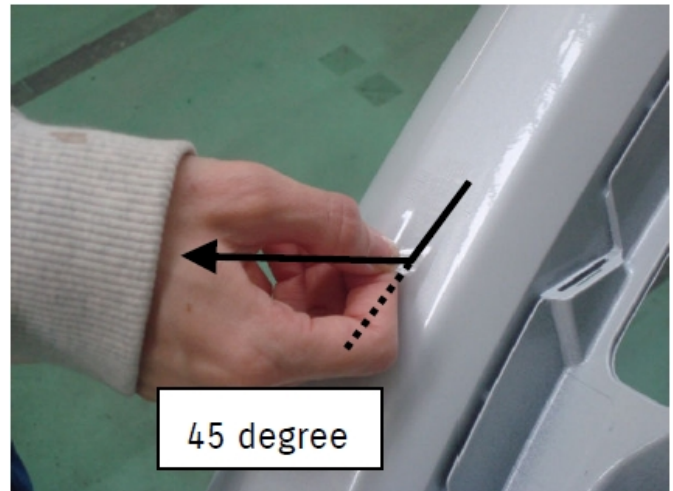
1. Apply the tape to the spot left by the clip during the painting process. The spot should be completely covered by the tape.



2. Remove any air bubbles and create maximum tape adhesion to the spot by rubbing the tape with your finger.



3. Remove the tape by pulling on it with a 45 degree angle between the tape and painted surface.



4. If the primer is lifted from the part by removing the tape, the part is affected.
  - a. Replace the affected part(s) with a new part(s).

OR

- b. Repaint the affected part(s).

**NOTE:**

*In the case an existing part is to be repainted, the existing primer will have to be completely removed to provide sufficient bonding of the new primer to the part during the painting process.*





## KIZASHI TEST POINTS

### Kizashi Clip Spot Locations

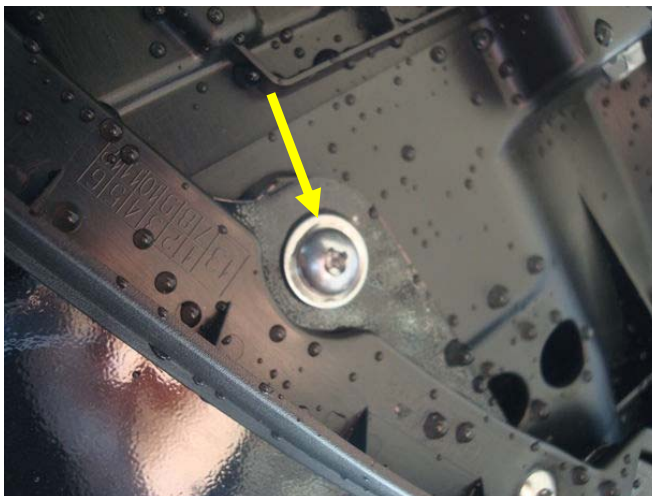
#### Kizashi Front Bumper

1. Located at the bottom left side.



#### Kizashi Sport Front Bumper

1. Located at the bottom left side.
  - a. Remove the fastener to access the clip spot.



**Kizashi and Kizashi Sport Rear Bumper**

1. Located at the right side exhaust cover.
  - a. Remove the exhaust cover fastener to access the clip spot.

**Kizashi and Kizashi Sport Side Sill Guard**

1. Located at the rear bottom area of the left and right side sill guards.
  - a. Remove the strake to access the clip spot.

