

Technical Bulletin

Division: Automotive
Category: Technical

Section Title: Control Systems
TSB No. TS 03 12170

SUBJECT: KEYLESS REMOTE CONTROLLER REGISTRATION PROCEDURE.
MODEL(S): KIZASHI (A6B424)
YEAR: 2010

CONDITION: Registering one or more keyless remote controllers through the “Immobilizer Key Registration” function.

CAUSE: The addition of new keyless remote controllers, the replacement of lost keyless remote controllers, or the replacement of the keyless start control module.

CORRECTION: Follow the steps listed in this bulletin to properly register the keyless remote controllers.

- Register remote controller ID code using “Immobilizer Key Registration” function using the SUZUKI SDT scan tool.
- Remote controller registration is performed through “Immobilizer Key Registration”, and this registers the immobilizer transponder code.
- **Performing “Immobilizer Key Registration”, clears all of the ID codes already registered. You must reprogram all of the remote controllers both new and existing.**
- It is possible to register up to 4 remote controllers in the keyless start control module.
- If the keyless start control module is replaced, you must reprogram all of the remote controllers. The TPMS sensors will also need to be registered again to the new controller.
- **If all of the remote controllers are lost, the keyless start control module must be replaced before any remote controllers can be registered.**

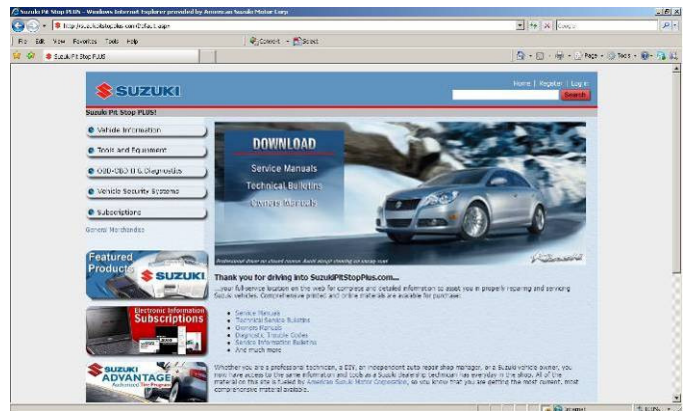
Technical Service Department
Dealership Circulation – Initial and file:

Service Manager	Parts Manager	Service Advisor	Technicians						

Suzuki bulletins are intended for use by professional technicians, NOT a “do-it-yourselfer.” They are written to inform these technicians of conditions that may occur on some vehicles, or to provide information that could assist in the proper service of a vehicle. Properly trained technicians have the equipment, tools, safety instructions, and know-how to do a job properly and safely. If a condition is described, DO NOT assume that the bulletin applies to your vehicle, or that your vehicle will have that condition. See your authorized Suzuki dealer for information on whether your vehicle may benefit from the information. Suzuki reserves the right to change technical specifications at any time without prior notice.

TOOLS REQUIRED:

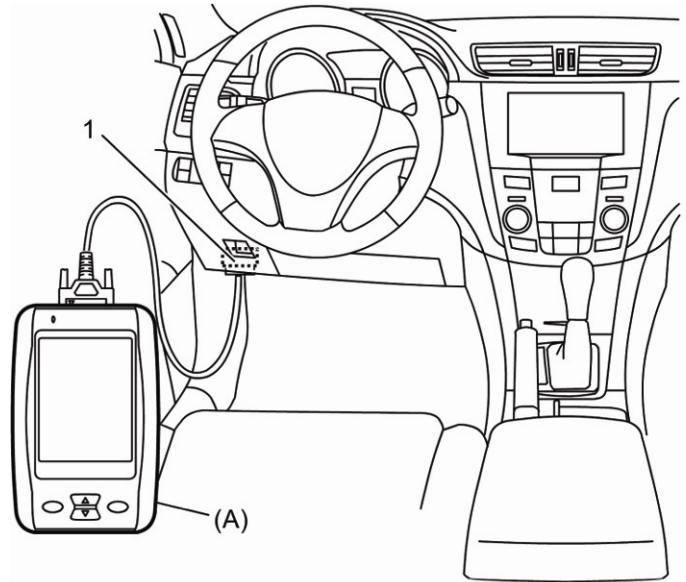
1. Suzuki SDT scan tool
2. Immobilizer Cable
3. PC or Laptop computer with internet connection and dealership login to SuzukiConnect.com for access to SuzukiPitstopPlus.com



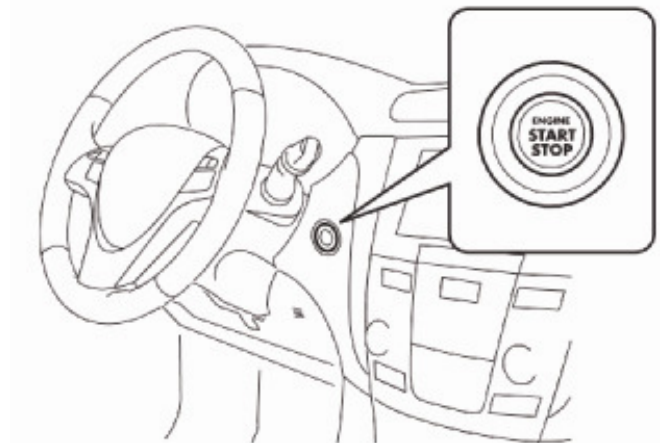
NOTE: In the event that the registration process is interrupted before it is finalized, it may result in all keyless remote controllers being deleted from memory, requiring that the keyless start control module be replaced (not a warranty issue). If for any reason the procedure fails, is aborted, or interrupted, **DO NOT** push the “Ignition Start Button” to turn the vehicle ignition “Off”. **At least one remote controller must be registered to enable the vehicle to be switched to the “Ignition ON” state to allow access to the Keyless entry and Immobilizer systems.** To help prevent interrupting the process, be sure that the vehicle battery is fully charged and all cables are securely connected at the SDT, Immobilizer cable, and DLC (Data Link Connector) to the vehicle.

Registration Procedure

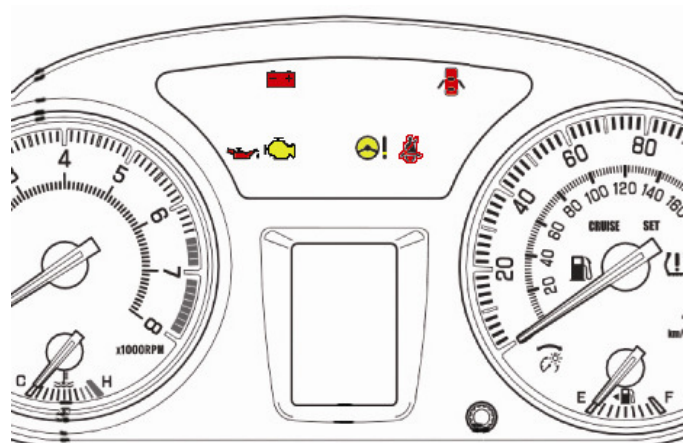
1. Begin by confirming that the SDT scan tool has the latest software version installed, and the Date & Time is properly set.
2. Install the immobilizer cable to the SDT scan tool (A), then connect the scan tool to the vehicles DLC (Data Link Connector) (1)



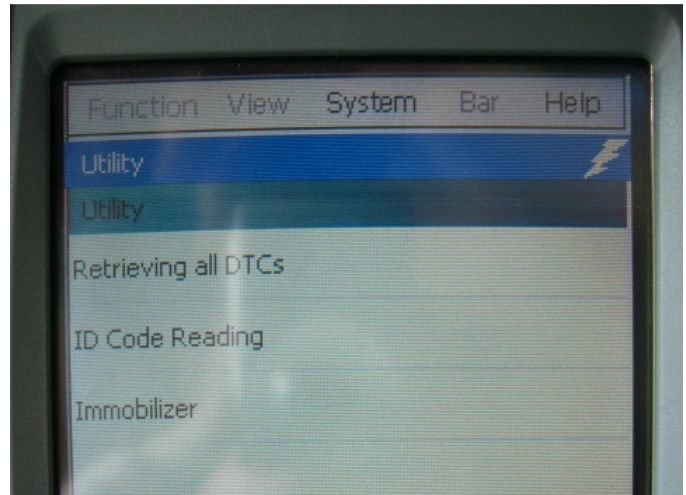
3. Turn the vehicle ignition "On" without starting the engine by pushing the vehicle's Engine Start/Stop button twice without depressing the brake or clutch pedal.



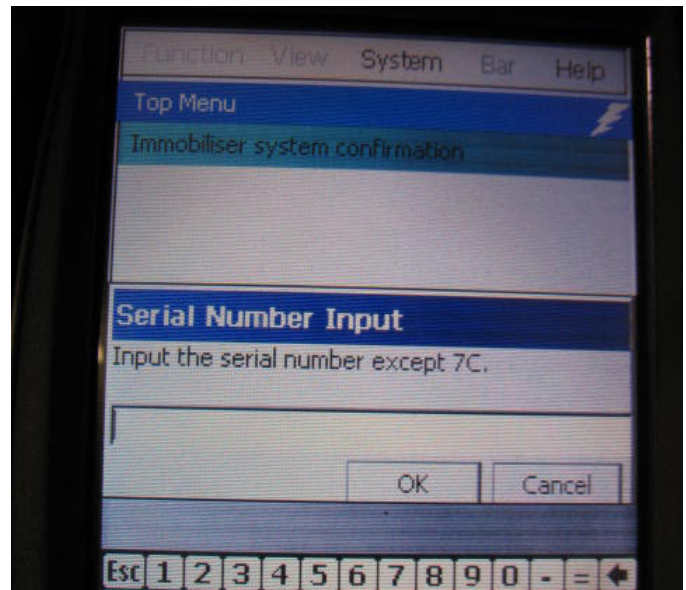
4. Check that the warning lights (Battery, Oil, MIL, etc.) are illuminated on the instrument panel to confirm the ignition is "On"



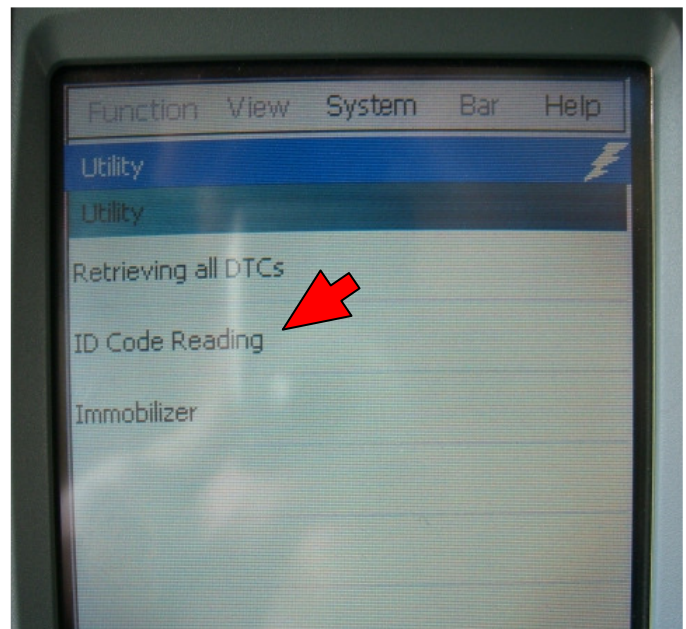
5. Power on the SDT scan tool. With the immobilizer cable connected, the scan tool will automatically start up at the Immobilizer screen.



NOTE: Once the SDT is powered on, if the screen pictured to the right is displayed with the immobilizer cable connected, it indicates that the Immobilizer Cable has not yet been activated to the scan tool. Please call (714)996-7040 ext. 2062 to obtain the activation code for your cable, and refer to TSB number **TS 01 12158R** for instructions to setup the Immobilizer Cable.

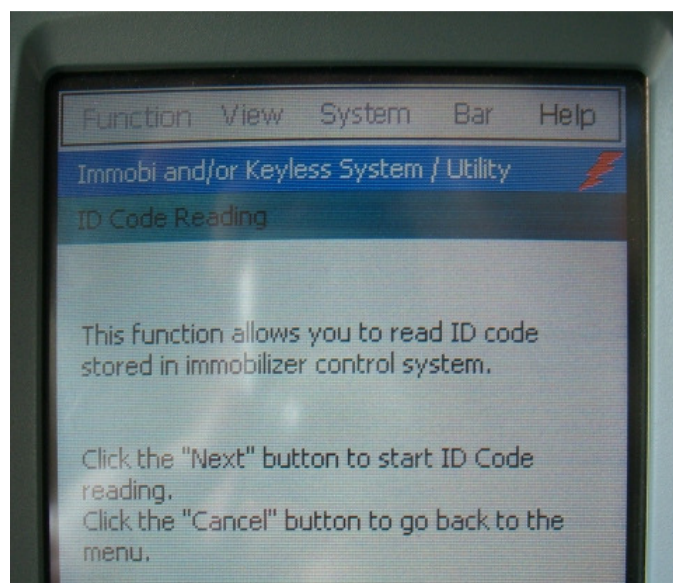


6. Begin by selecting the "ID Code Reading" option from the Immobilizer screen.



7. The screen will describe the function which has been chosen.

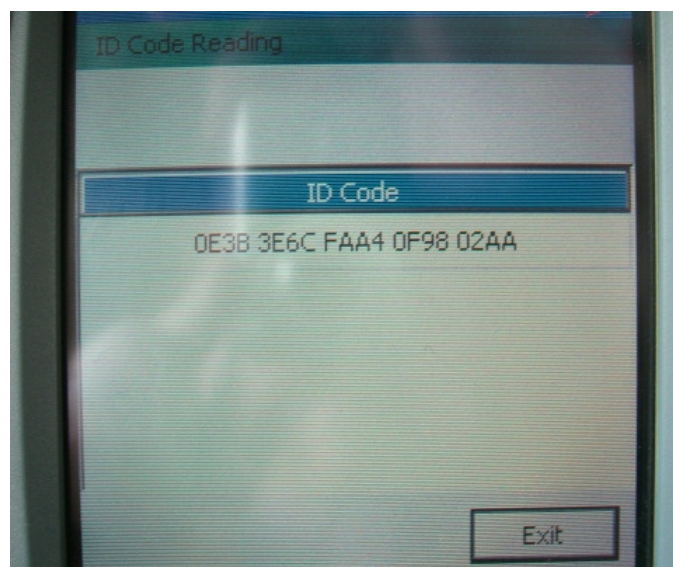
8. Push "Next".



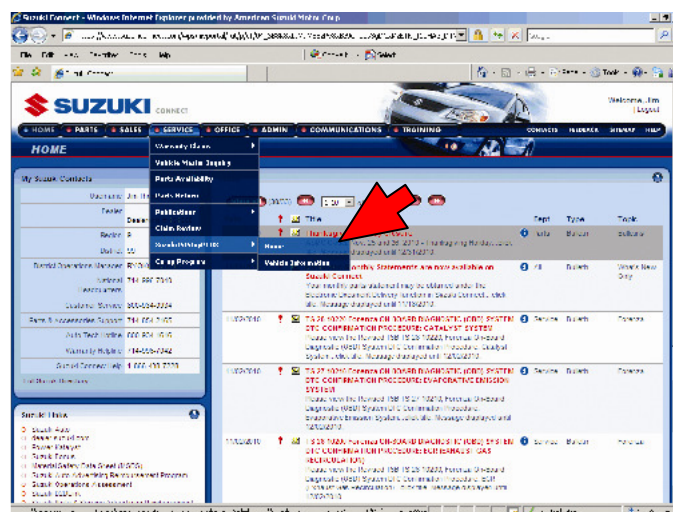
9. Record the 20 digit "ID Code" that is displayed on the scan tool screen.

10. Push "Exit".

11. You will also need to have the VIN number of the vehicle, as well as the serial number from your immobilizer cable before going to your computer to request the passwords from SuzukiPitstopPlus.com.



12. Using the PC/Laptop, log on to SuzukiConnect.com. When the home page has loaded, place the mouse cursor over the "SERVICE" tab, a dropdown list will appear, follow it down to the "SuzukiPitStopPLUS" option, another list will appear to the right, slide the cursor over and click on the "Home" option.



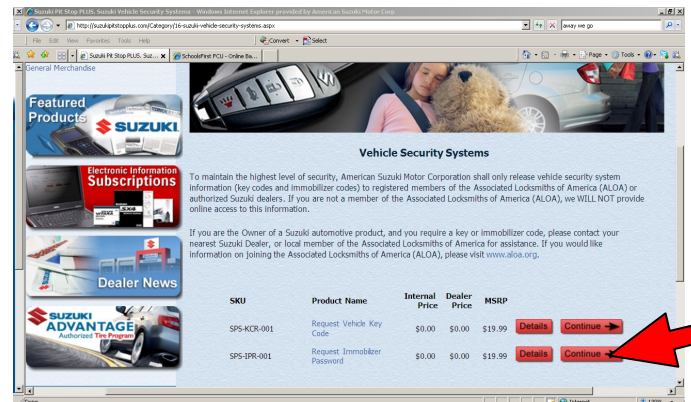
13. A new window will appear and open to the SuzukiPitstopPlus.com home page. Click on the “Vehicle Security Systems” menu bar.



14. At the Vehicle Security Systems page you are offered two (2) options:

- “Request Vehicle Key Code”
- “Request Immobilizer Password”

15. Click on “Continue” to the right of Request Immobilizer Password.



16. Read the Terms & Conditions document, then click the “Accept” button just below the bottom left corner of the dialog box.



17. When the Terms & Conditions are accepted and the Online Immobilizer Password Request page is loaded, begin filling in the information fields. All fields are required to be filled in for security purposes. Requests are never to be made for any person, or vehicle, that is not present and being repaired at an authorized Suzuki Dealer. The information needed is:

- Technician (requester) First & Last name
- The requester's Title
- Dealer number (Dealer Code)
- Cable Serial # (found on the Immobilizer cable)
- VIN (Vehicle Identification Number)
- Encrypted Pin (20 digit ID Code retrieved in steps 5 & 6 above)

ONLINE IMMOBILIZER PASSWORD REQUEST

Request Details

First Name:	Jim	*
Last Name:	Thompson	*
Title:	Tech Specialist	*
Dealer Number:	454990	*
Cable Serial #:	7C0 2389	*
VIN:	JS2RE9A52A6100211	*
Encrypted PIN:	8FA0B 1C 9E 8E8058 6022C	*

Continue

18. Click "Continue"

19. The information will be computed and the Immobilizer password page will be displayed. Record both Password 1 and Password 2, then return to the vehicle and SDT scan tool.

YOUR IMMOBILIZER PASSWORD

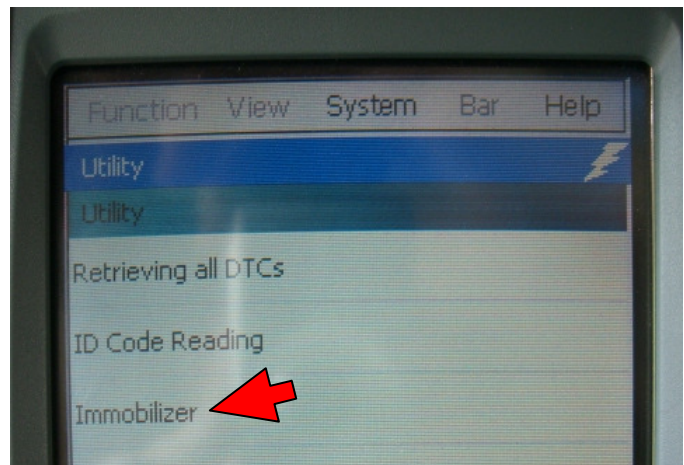
Thank you for your Immobilizer Password purchase. Please see your password below.

Vehicle VIN:
JS2RE9A52A6100211

Immobilizer Password 1:
[REDACTED]

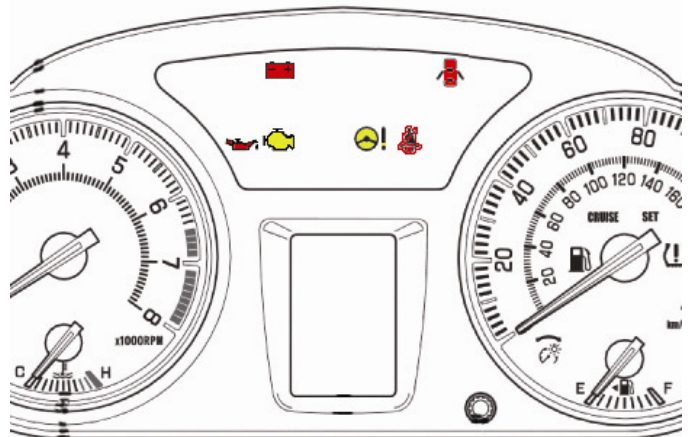
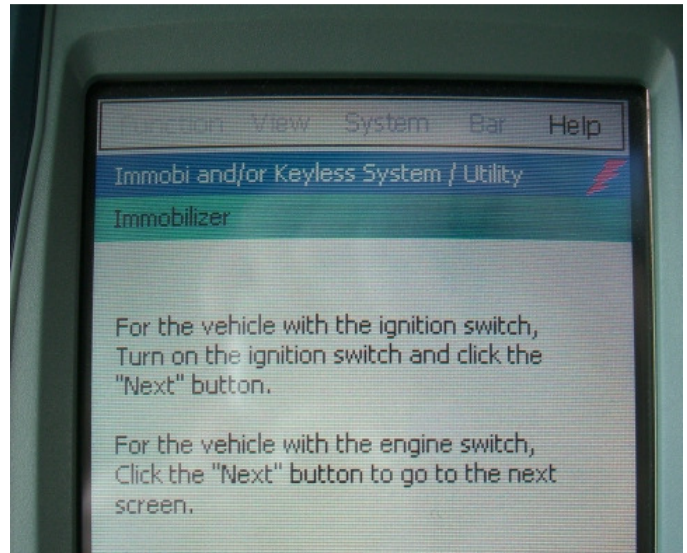
Immobilizer Password 2:
[REDACTED]

20. On the SDT main immobilizer menu screen, select the "Immobilizer" option.



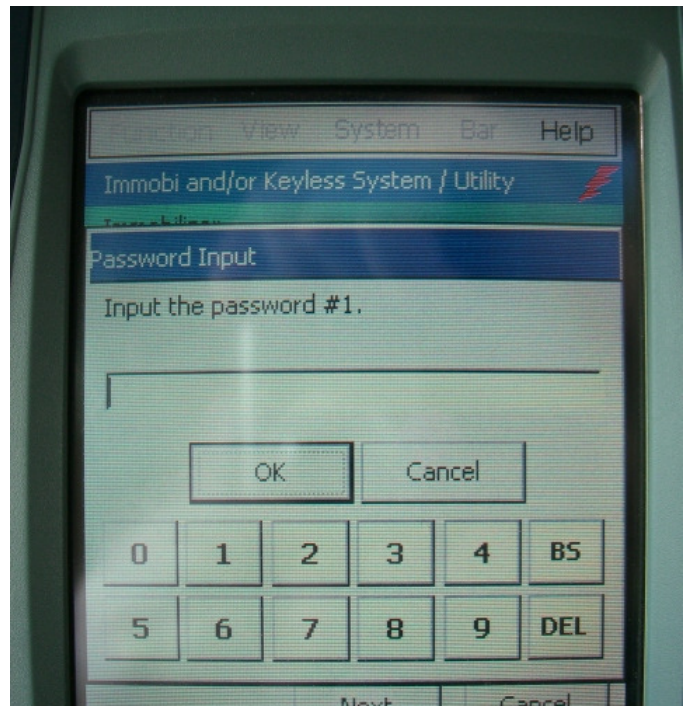
21. Following the instruction prompts on the SDT scan tool screen, if the ignition is "Off", turn the ignition switch "On" by pressing the ignition start button twice **without depressing either the brake or clutch pedal**. Confirm the vehicle ignition is on by observing the proper warning lights are illuminated in the instrument panel.

22. Press "Next".



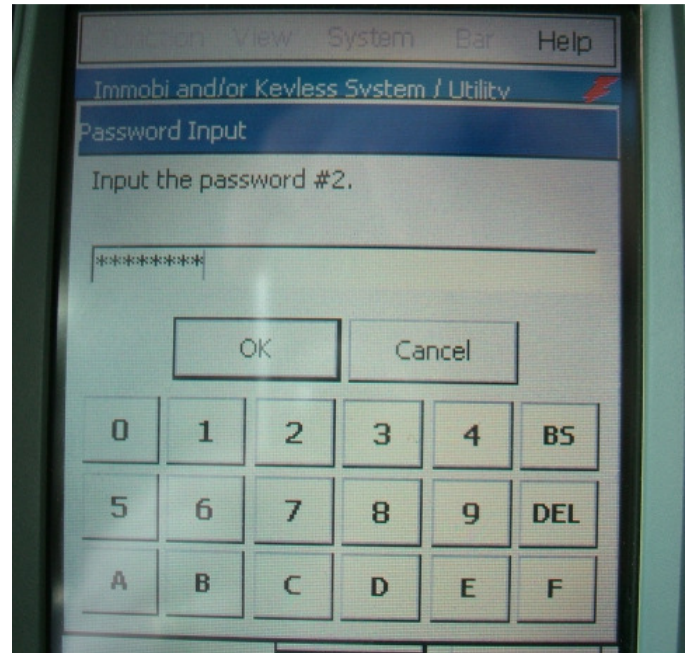
23. At the password screen you will be asked to enter the "Password #1" retrieved from SuzukiPitstopPlus.com. Key in the six digit password.

24. Press "OK".



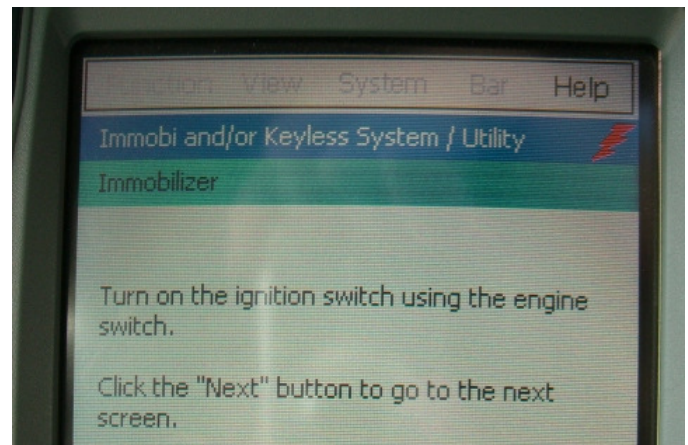
25. The next screen asks you to enter the "Password #2". Key in the eight digit alpha-numeric password.

26. Press "OK".



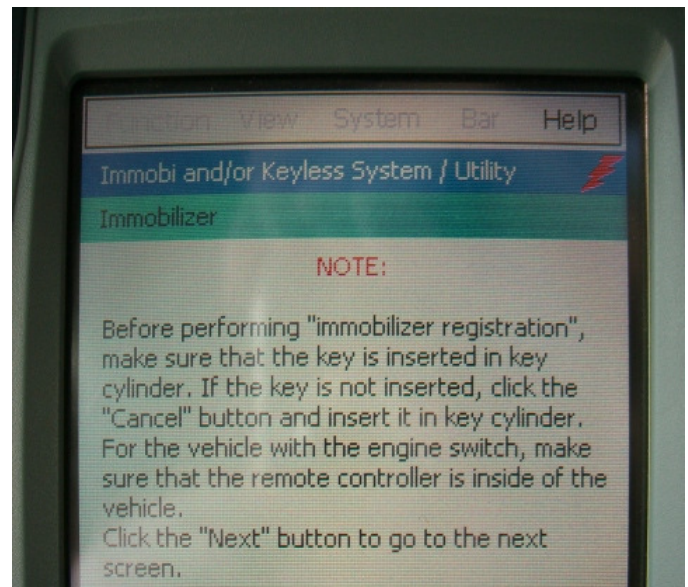
27. The ignition should still be "ON", but in case it is not, please turn the ignition on by pushing the ignition start button twice **without pressing the brake or clutch pedals.**

28. Press "Next".



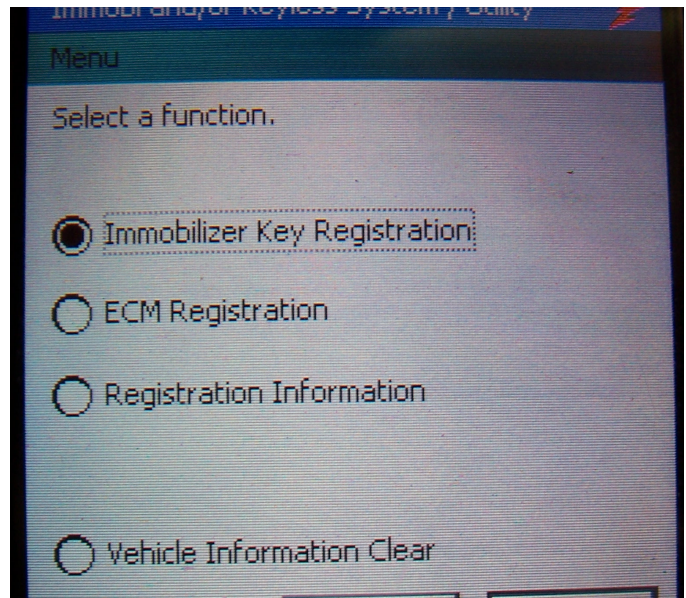
29. This screen is a reminder to be sure that all the remote controllers that are to be registered are in the vehicle.

30. Press "Next".



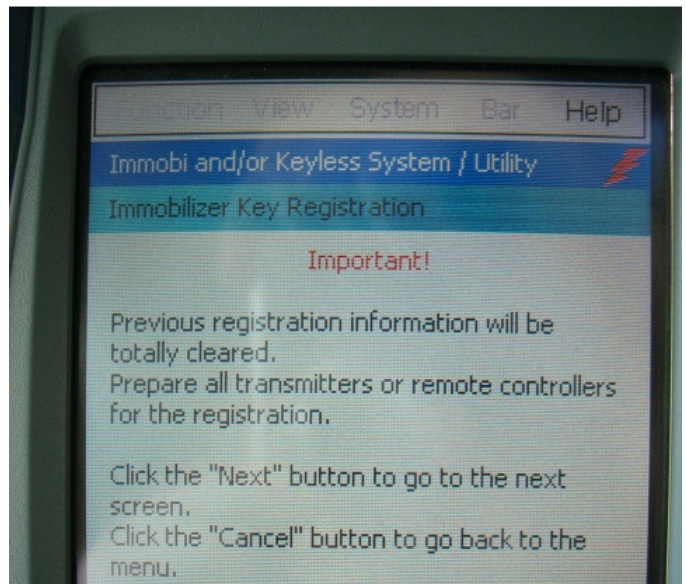
31. To add an additional or replacement remote controller, select "Immobilizer Key Registration".

32. Press "Next".



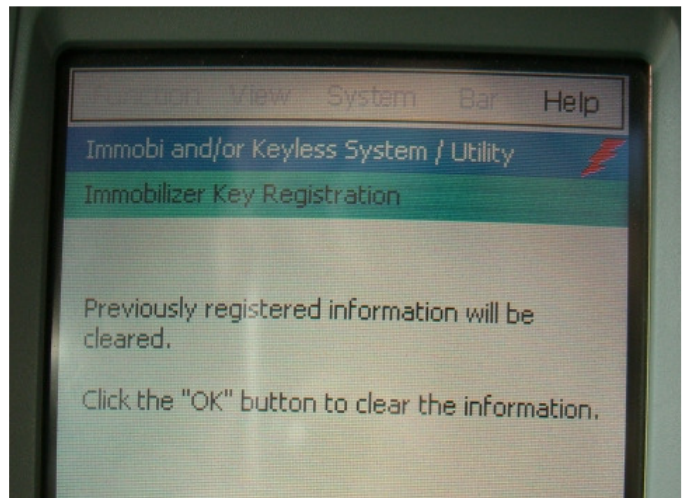
33. Please read and heed the "Important!" notice that reminds you that all previously registered information will be cleared, and to prepare all remotes to be registered.

34. Press "Next".



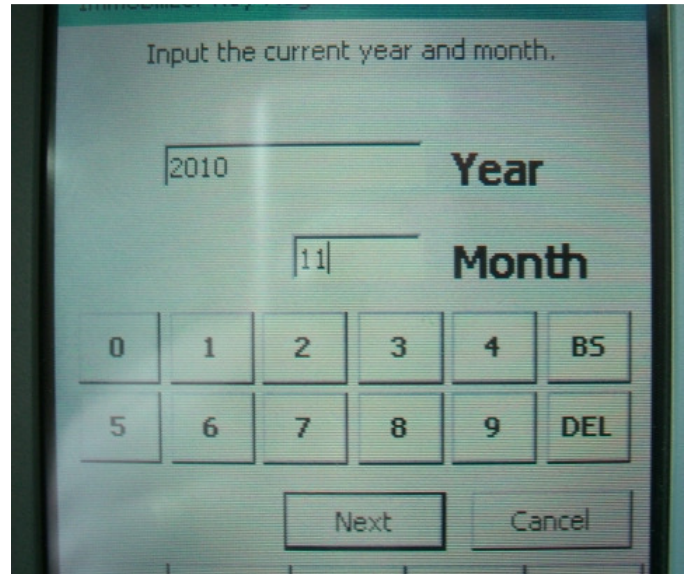
35. The next screen represents the step that actually clears all the previously registered information, and offers a final chance to ensure you have all remotes ready to proceed.

36. Press "OK".



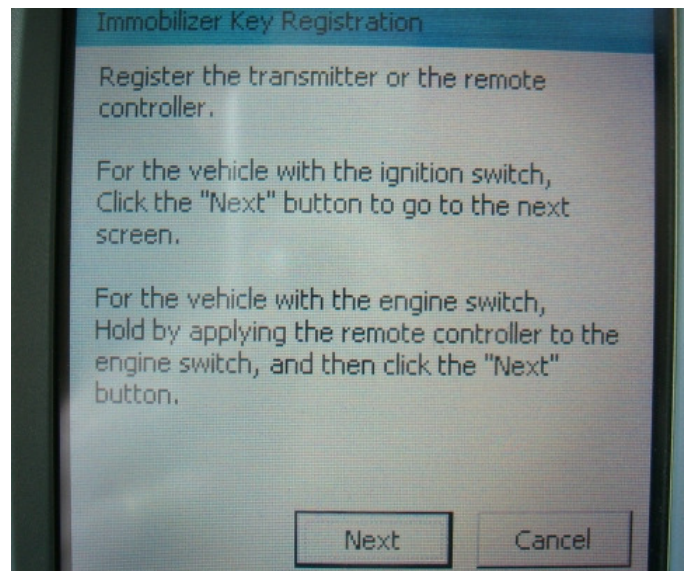
37. Enter the current year and month.

38. Press "Next".

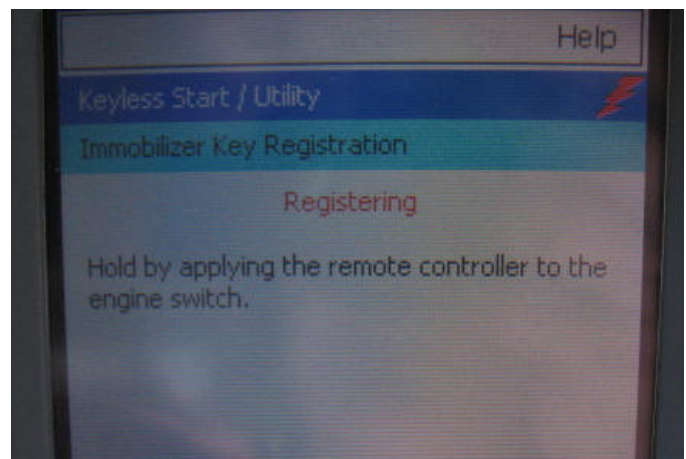


39. Take one of the Keyless Remote Controllers to be registered and hold it up to the Engine Start/Stop button.

40. While holding the remote up to the start switch, press "Next".

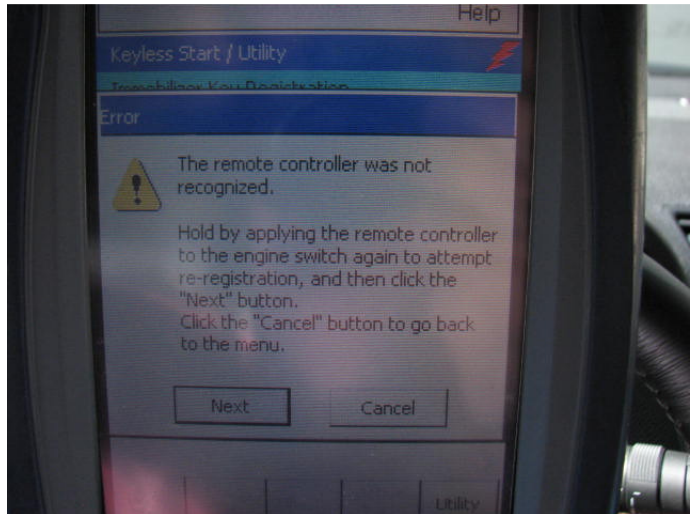


41. The screen will change slightly, now displaying "Registering" above the instruction "Hold by applying the remote...", continue holding the remote up to the Engine Start/Stop button until the screen changes.

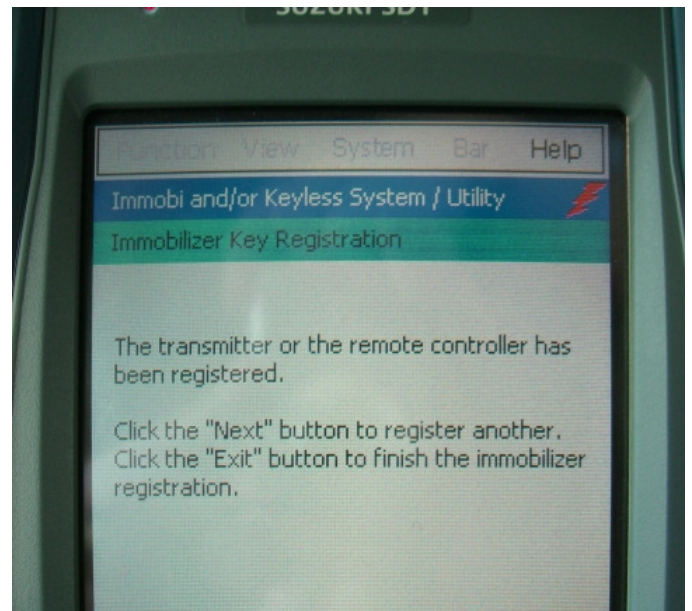


42. If there was a problem recognizing a remote controller, an error message will appear, and it will offer another attempt to register the remote. Again hold the desired remote up against the Engine Start/Stop button, and press "Next".

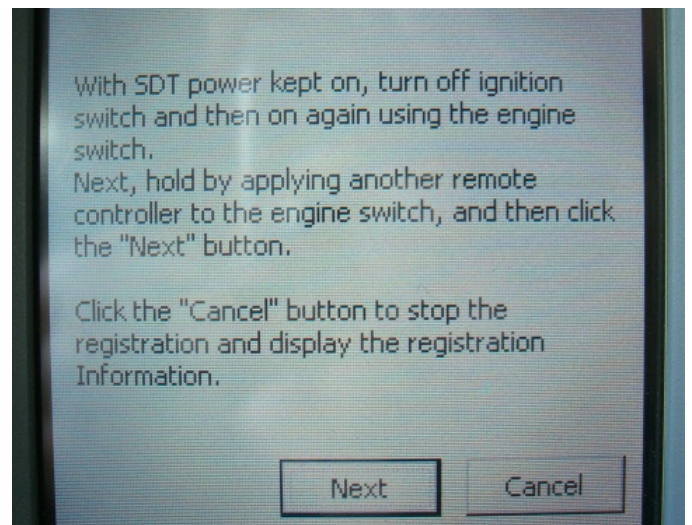
NOTE: If the remote controller will not register and the "Cancel" button is pressed, the SDT scan tool will end the registration process and go to the Immobilizer start screen. **DO NOT turn off the ignition**, this will result in the need to replace the controller. Simply begin the registration process again, using the same passwords as before.



43. Once the remote controller is recognized, the screen will change to read "The remote controller was registered."
44. Press "Next" to continue programming the remaining remote controllers, and continue to Step 45. If only one remote controller is being registered, press "Exit" and jump to Step 50.

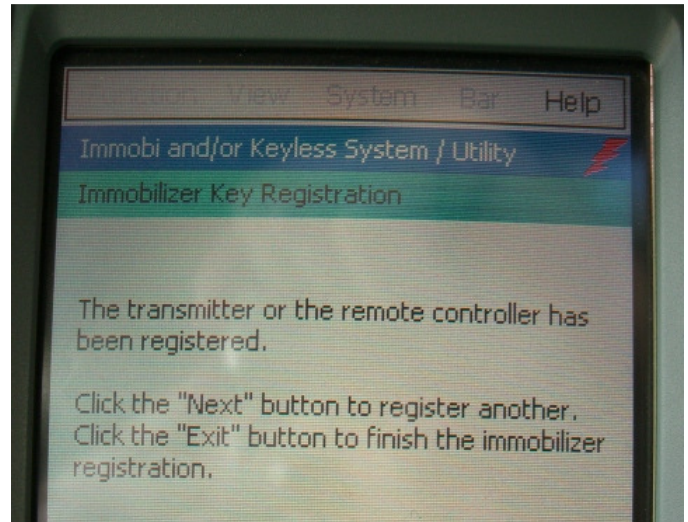


45. Set the registered remote aside where it won't be confused with those remaining to be registered.
46. Keeping the SDT powered on, push the Engine Start/Stop button once to turn the ignition "Off" (the warning lights in instrument panel will go off), then push Engine Start/Stop button twice more to turn the ignition back on.
47. Hold another remote controller up to the Engine Start/Stop button and press "Next".



48. Once the remote is registered, to program another remote press "Next", and repeat Steps 43-47 until the remaining remote controllers are registered.

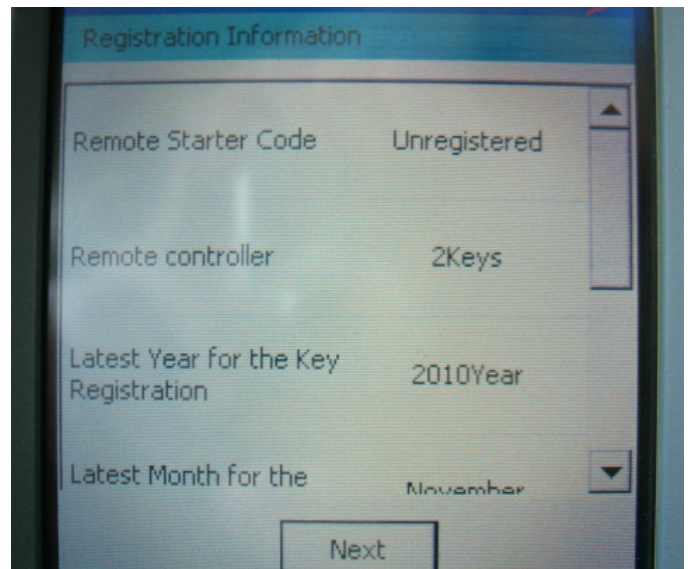
49. Press "Exit" when all remotes have been registered.



50. A screen will display a summary of the registration process, including the total number of Keyless Remote Controllers that are now registered, the Year and Month that you entered during this process, vehicle info, etc., the registration process is now completed.

51. Press "Next".

52. Test the Keyless Remote controllers by starting the engine, and operating the door locks (start vehicle with only one remote inside the car, then repeat with all other remotes)



53. Now that the "Immobilizer Registration" procedure has been completed, all of the internal codes and passwords will be changed. If the "Immobilizer Registration" process needs to be done again, the "ID Code Reading" will need to be performed again to retrieve and apply the new code to SuzukiPitstopPlus.com, refer to Steps 6-19.

