


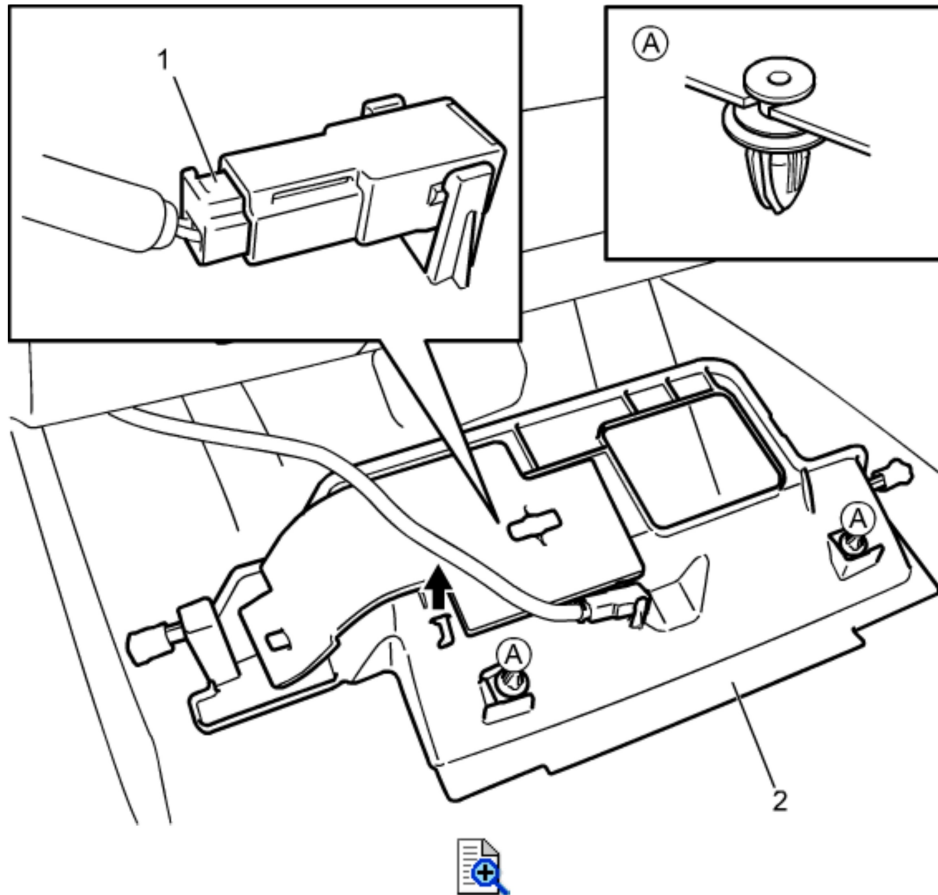


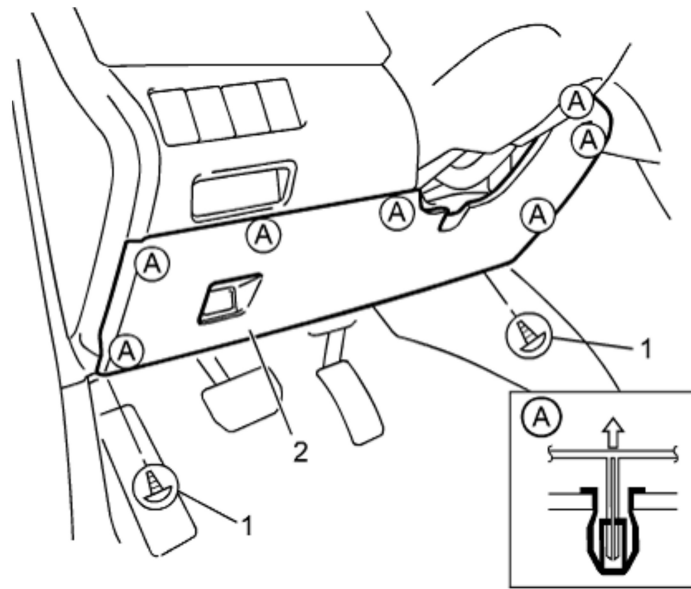
9C

Combination Meter Removal and Installation

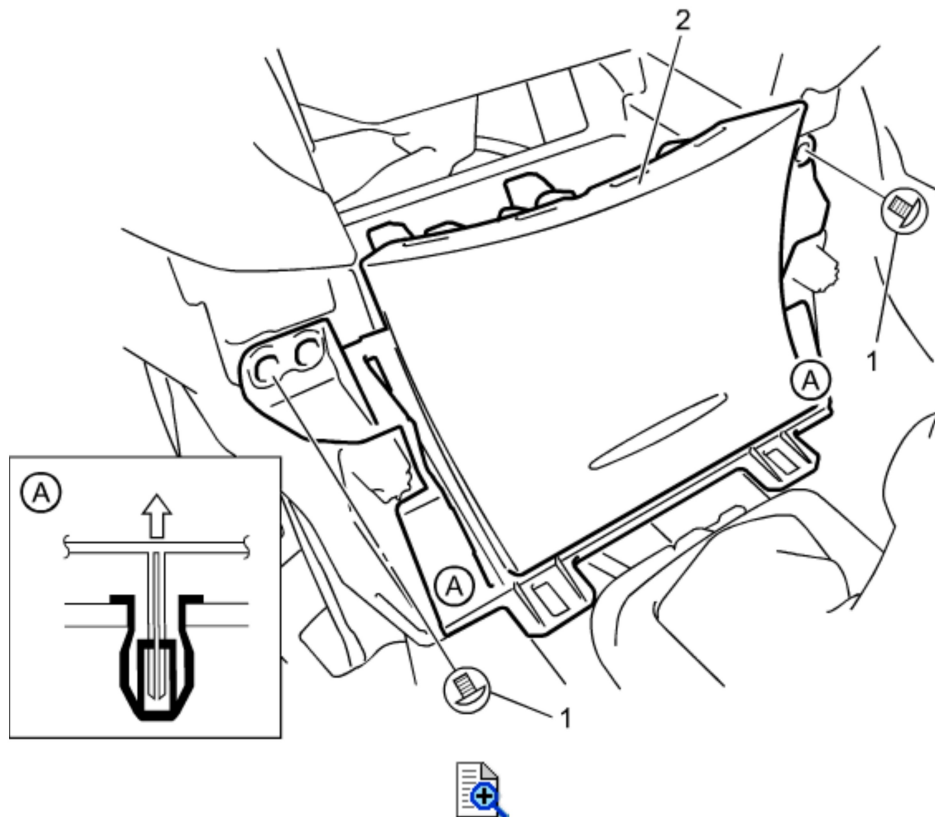
- 1) Remove floor console front garnish. 
- 2) Remove audio unit. 
- 3) Remove column hole blind holder. 
- 4) Remove driver side instrument panel undercover (2) and, while supporting it, disconnect connector (1).



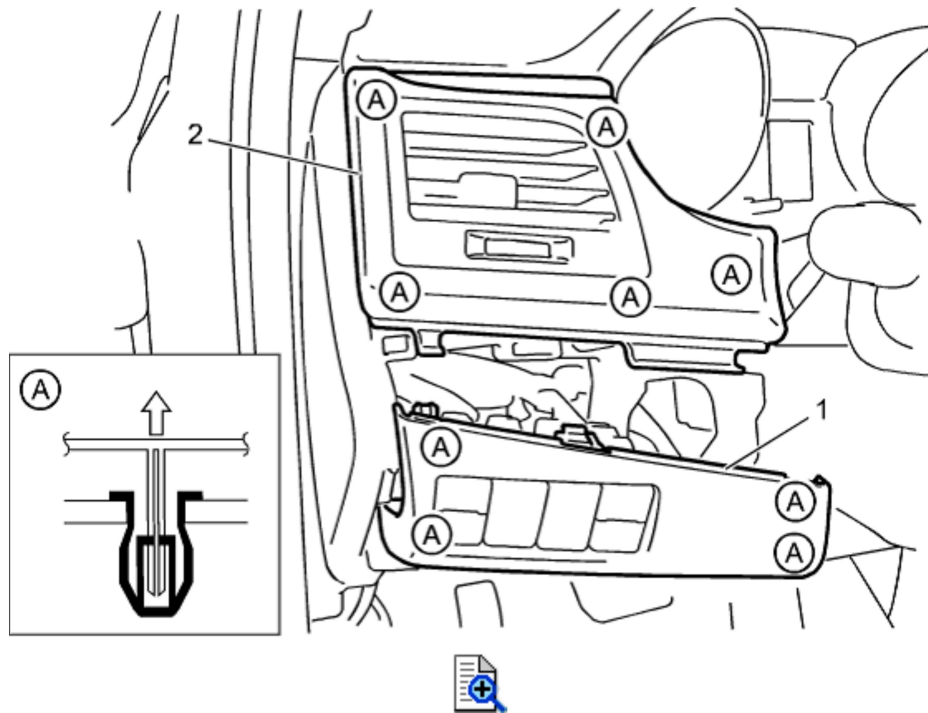
- 5) Remove screws (1) and remove steering column hole cover (2).



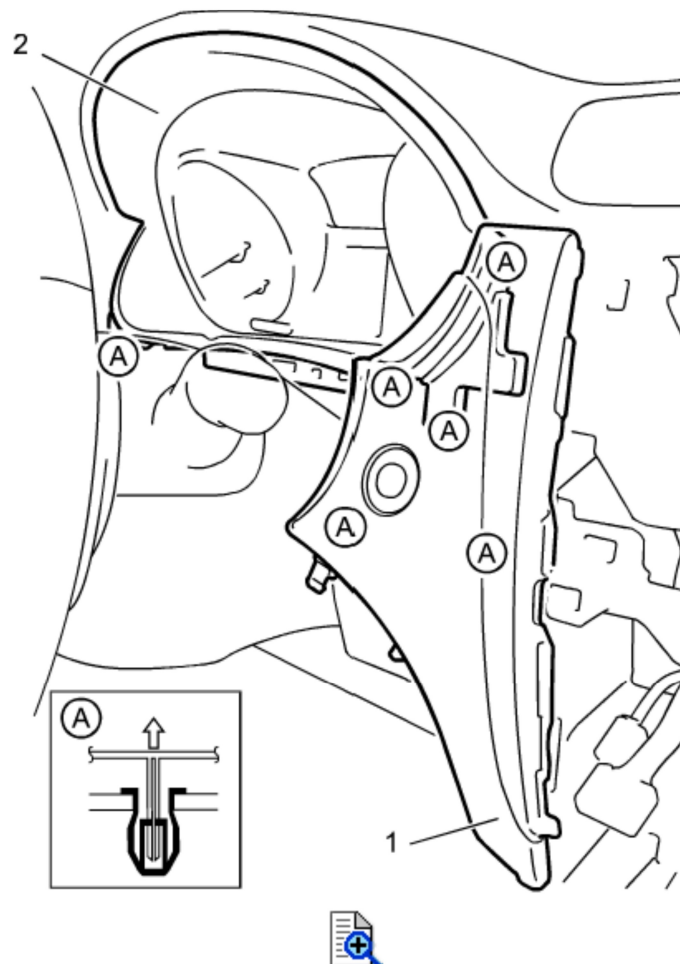
6) Remove screws (1) and remove instrument panel center lower box (2).



7) Remove instrument panel switch bezel (1), then remove driver side instrument panel outside garnish (2).

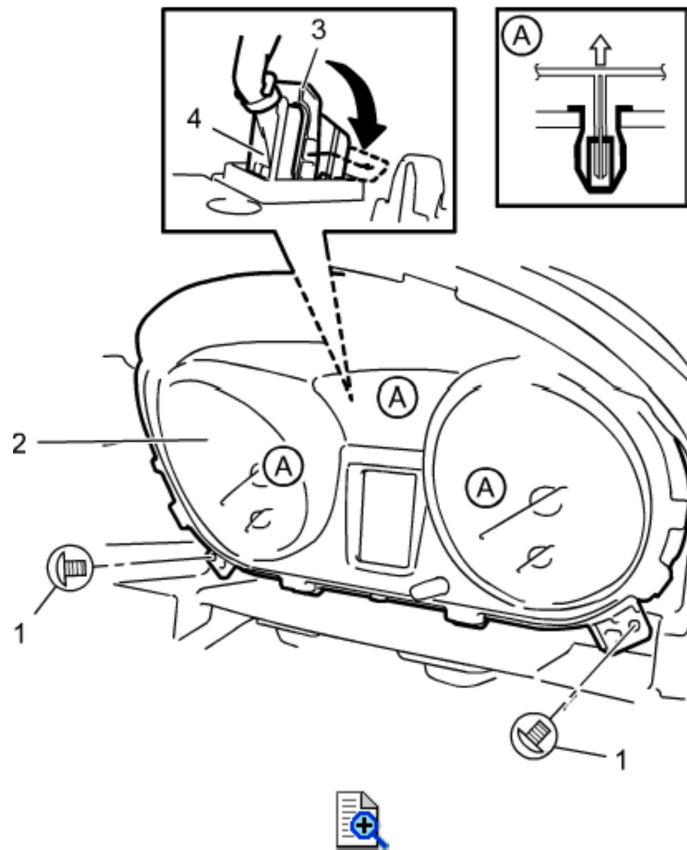


- 8)** Remove driver side instrument panel inside garnish (1), and then remove instrument panel cluster panel (2).



9) Remove screws (1) and remove combination meter (2).

10) Release lock (3) and disconnect combination meter connector (4).



Installation

Reverse removal procedure.